



BSEN 12566-3*
Certified Performance to 96.2% efficiency

MODELS

CLF1 (6pe) to CLF17 (300pe)

OPERATION AND **MAINTENANCE MANUAL**

***Applies to models CLF1 – CLF7 only**

OPERATION AND MAINTENANCE MANUAL

INTRODUCTION

Congratulations on the purchase of your **MATRIX** Treatment System. It is designed and manufactured by C & L Fabrication Limited in the UK, with reliability and efficiency being prime objectives of our company.

We ask that you take time to fully read this manual to ensure that all the installation requirements are met and the operating principles are fully understood so that you can enjoy a trouble free system.

It is extremely important to read the health and safety information before working on the plant.

CONTENTS

		Page No.
	BSEN12566-3 Process Certificate	3
	BSEN12566-3 Structural Certificate	4
Section 1	Health & Safety	5
Section 2	Plant Description	7
Section 3	Installation instructions	9
Section 4	Operating Sequence	14
Section 5	Plant Start-up / Shutdown Procedure	15
Section 6	Maintenance	17
Section 7	Fault Finding	19
Section 8	Technical Data	20
	Contact Details	38

NOTE: If you require any further information regarding the operation of the equipment, please contact our Customer Services Department 0800 32 888 52

PERFORMANCE RESULTS

C & L Fabrication Limited
Unit D3, Hortonwood 10, Telford,
Shropshire, TF1 7ES, Great Britain

EN 12566-3 Annex B

"Small wastewater treatment systems for up to 50 PT"

Small wastewater treatment systems MATRIX CLF
Submerged aerated filter bed

Nominal organic daily load	0.34	kg/d
Nominal hydraulic daily load	1.20	m ³ /d
Material	PP	
Treatment efficiency (nominal sequences)	COD	91.4 %
	BOD ₅	96.2 %
	SS	95.5 %
	NH ₄ -N*	83.3 %
Electrical consumption	1.4	kWh/d

* determined for temperatures $\geq 12^{\circ}\text{C}$ in the bioreactor.

Performance tested by:

PIA - Prüfinstitut für Abwassertechnik GmbH
(PIA GmbH)
Hergenrather Weg 30
D-52074 Aachen

Certified according to
ISO 9001:2000



Notified Body number: 1739 

This document replaces neither the declaration
of conformity nor the CE marking.

Prüfinstitut für Abwassertechnik GmbH


Elmar Dorgeloh
May 2009

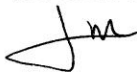
3.3.5 Results

Plant reference	MATRIX CLF 7					
Declared date of manufacture	08/07/09					
Maximum authorised depth of backfill	65 cm					
Condition of use	Not within the water table (dry ground conditions)			Within the water table (wet ground conditions following testing in dry ground conditions)		
Observed characteristic	Visual assessment	Volume	Deformation	Visual assessment	Volume	Deformation
Before test	/	$V_{1dry} =$ 20 970 litres	/	/	$V_{1wet} =$ 20 128 litres	/
After being buried for 24 hours	/	$V_{1dry} =$ 20 662 litres	- 1,5% (after 24 hours)	/	$V_{1wet} =$ 20 120 litres	- 0% (after 24 hours)
A the end of the test	No failure No deformation at connections	$V_{2dry} =$ 20 128 litres	$\Delta_{dry} =$ $V_{2dry} - V_{1dry} =$ - 534 litres i.e. - 2,6% of the initial volume (after 3 weeks)	No failure No deformation at connections No loss of watertightness	$V_{2wet} =$ 20 032 litres	$\Delta_{wet} =$ $V_{2wet} - V_{1wet} =$ - 88 litres i.e. - 0,4% of initial volume (after 3 weeks) $\Delta_{total} =$ $V_{2wet} - V_{1dry} =$ - 630 litres i.e. - 3,0% of initial volume (after 6 weeks)

Table 1. Results of the structural behaviour test (Pit Test)

This test report only certifies the characteristics of the sample submitted for testing and makes no judgement about the characteristics of similar products. It does not, therefore, constitute product certification under article L 115-27 of the French consumer code and of the law of 3 June 1994. The specifications of the reference standard are given for information.

Test carried out by:



L. MORCET LAMARCHE

Test Manager:



S. POUDEVIGNE

HEALTH AND SAFETY

United Kingdom Health and Safety at Work Act 1974

Section 6a of this act requires manufacturers to advise their customers on the safety and the handling precautions to be observed when installing, operating, maintaining and servicing their products.

The user's attention is drawn to the following:

1. The appropriate sections of this manual must be read before working on the equipment.
2. Installation must only be carried out by suitably trained/qualified personnel.
3. Normal safety precautions must be taken and appropriate procedures observed to avoid accidents.

Refer to [C & L Fabrication Ltd](#) or your local distributor for any technical advice or product information.

HEALTH

The following is extracted from a health warning card supplied to all [C & L Fabrication Ltd](#) staff. It is the client's responsibility to ensure that all necessary protective clothing/equipment is available.

Leptospirosis Are you at risk?

What is Leptospirosis?

Two types of Leptospirosis affect people in the UK.

Weil's disease. This is a serious infection that is transmitted to humans by contact with soil, water or sewage which has been contaminated with urine from infected rats.

Hardjo type Leptospirosis which is transmitted from cattle to humans.

What are the symptoms?

Both diseases start with a flu like illness with a persistent and severe headache, muscle pains and vomiting. Jaundice appears about the fourth day of the illness.

How might I catch it?

The bacteria can enter your body through cuts and scratches and through the lining of the mouth and throat and eyes.

How can I prevent it?

After having worked in sewage or anything contaminated with sewage, wash your hands and forearms thoroughly with soap and water. If your clothes or boots are contaminated with sewage, wash thoroughly after handling them.

Take immediate action to wash thoroughly any cut, scratch or abrasion of the skin immediately. Apply antiseptic to the wound, cover with cotton wool or gauze, and protect with a waterproof plaster.

DO NOT handle food, drink or smoking materials without first washing your hands.

If you contract the symptoms described after coming into contact with sewage, report to your doctor immediately and advise him/her of the circumstances.

SAFETY

Sewage gases are potentially explosives and toxic. **DO NOT** enter any of the below ground compartments of the Sewage treatment plant.

Before carrying out any maintenance work, the equipment **MUST** be electrically isolated at the fuse box from which the blower power supply is derived.

Do not leave covers open for any longer than necessary. Temporary barriers and warning signs should be erected around any open covers or manways as appropriate.

PLANT DESCRIPTION & PROCESS

The **MATRIX** range of treatment systems for residential population equivalents up to 300 persons are a "unitank" design comprising a primary settlement stage, a biological filtration zone and a final settlement zone, within a single structure.

THIS MANUAL REFERS SPECIFICALLY TO TREATMENT PLANT MODELS**CLF1 (6pe) to CLF17 (300pe)**

The plant will provide long and trouble free operation provided the simple maintenance procedures are adhered to.

Your attention is drawn to the Health and safety section in this manual. It is imperative that you read these instructions carefully before attempting to carry out any work on the system.

The plant has been designed to treat the volume and strength of sewage specified in the original quotation and as detailed in the technical data section of this manual. To ensure that the plant continues to operate efficiently, your attention is drawn to the following points:

- DO NOT** exceed the maximum design loading of the plant.
- DO NOT** allow surface water to enter the system.
- DO NOT** allow high volume discharges such as from swimming pools or jacuzzis to enter the system.
- DO NOT** allow large quantities of chemicals such as water softener regenerant, disinfectants, strong acids or alkalis, oil and grease, pesticides or photographic chemicals to enter the system.
- DO NOT** use chemical or biological emulsifiers in grease traps.

If you have any doubt about a particular substance, please contact the Customer Service Department at [C & L Fabrication Ltd](#) for further advice. 0800 32 888 52

SCOPE OF SUPPLY

The **MATRIX** system comprises the CLF unit itself and an enclosure containing an air blower unit and comes complete with 10m of airline.

CLF Unit

This comprises a single tank containing all the components required for the sewage treatment process.

The CLF tank is manufactured in Polypropylene and is supplied in a standard black/blue colour. It is completely impervious to water and sewage and has been designed to ensure a robust construction and a long service life. The tank is provided with a locking manhole cover providing access to all parts of the unit.

The submerged filter beds comprise of plastic pieces of filter media, randomly packed into the tank. The media is made from UV stable uPVC and provides a large surface area on which the bacteria, required for the purification process, can grow. The media is supported on an open mesh panel fixed above the base of the tank.

An air diffuser is installed into the submerged filter bed(s) and is located underneath the filter bed(s) this is connected to the external air supply (blower) by uPVC pipework.

The recirculation pipework is a uPVC pipe running from the bottom of the humus and media tank to the top of the primary settlement tank. The pipework has a tapping at its top where tubing is inserted down the uPVC pipe which is connected to the blower. (NOTE! On all models a control jet in the air line ensures a correctly balanced air flow between the air lift recirculation pipe and the diffuser in the submerged filter zone. The control jet is an integral part of the air lift hose connector which is fitted to the bulkhead between the humus tank and the submerged filter bed) The air lift system is used to recirculate effluent from the humus and media tanks to the primary settlement tank.

Blower

The blower is mounted along with its associated electrical controls inside a weatherproof enclosure.

The electrical controls comprise an isolator and a loss of air alarm connected to an external beacon which will provide a visual warning that the blower is not operational.

NOTE :

C & L Fabrication Ltd operate a policy of continuous product and process development and reserve the right to change specifications without prior notification.

INSTALLATION INSTRUCTIONS

Please read the Health & Safety, section 1 of this manual before attempting to work on the system.

Note: The **CLF** tank should be stored with access covers in place to prevent accumulation of rainwater within the unit.

IMPORTANT

The siting of a treatment plant must be agreed with the Building Regulation department of the local authority prior to installation. Similarly, the discharge from a treatment plant will be subject to a Consent to Discharge approval or an Exemption Certificate for treatment plants up to 5.0m³/Day, CLF4, (from 6th April 2010), from the Environment Agency which must be obtained before installation. Consideration must also be given to the need for access for desludging the unit by tanker

MECHANICAL INSTALLATION

Note: Please refer to drawing CLFINSTAL, Drawings, section 8 of this manual.

The following instructions are offered for guidance only. **C & L Fabrication Ltd** can accept no responsibility for incorrect offloading or installation.

The contractor is responsible for offloading all items of equipment with due regard to the following:

DO NOT use chains or wire ropes.

DO NOT lift the tank if it contains any water.

DO NOT subject the tank to sharp impacts.

DO check that all items delivered correspond with the packing note.

The CLF unit is provided with lifting eyes on the outside of the tank. These are not intended for transportation of the units. The lifting hook should be connected to the tank lifting eyes by separate slings of equal length. **Ensure that the slinging angle does not exceed 60° at the hook in order to eliminate excessive compressive loads on the side of the unit.**

When working in deep excavation, make sure that all necessary safety precautions are taken to ensure the stability of the excavation and provide safe working conditions for site personnel. The only time anyone needs to be working at the bottom of the excavation is when levelling the base and ensuring that the first backfill is correctly placed.

MECHANICAL INSTALLATION (continued)

It is the responsibility of the installer to determine the thickness and strength of concrete required to suit the ground conditions, taking into account the buoyancy of the unit when being desludged, external forces exerted by the water table, backfill, traffic loading, etc.

The installation should be carried out in accordance with the requirements of the Construction and Building Regulations. An inspection chamber should be installed upstream of the Matrix CLF unit.

During the course of the installation, the following minimum equipment will be required:

Normal construction equipment and plant.

Concrete to C20P and semi dry to 30mm slump.

An adequate supply of water to fill the unit at the same rate as backfilling.

Dewatering equipment as necessary.

Set of lifting straps of correct length and adequate SWL.

Please Note : The foul drain to the treatment plant MUST have a traditional soil/vent pipe at the head of the drain run. Air admittance valves, tile or ridge vents are NOT acceptable.

Excavate to the CLF tank dimensions allowing a minimum clearance of 150mm between the unit and the excavation sides. Excavate to the appropriate depth for the installation ie. depth of the unit plus 150mm minimum concrete thickness (actual thickness to suit ground conditions). NOTE : The standard inlet invert depth for the CLF 1,2 & 3 is 550mm, all other models have a 600mm standard inlet invert. If the invert of the inlet drain is deeper than this C & L Fabrication Ltd must be made aware at time of order so that the unit can be manufactured to suit.

Lay and level the concrete base for the tank to a minimum of 150mm thickness.

Lift the tank into position using slings, taking care not to damage any external flanges or pipework. Ensure correct orientation of the inlet and outlet pipework. Check that the tank is level in all directions. Commence backfilling with concrete in 500mm lifts, and at the same time, **fill each tank compartment with water starting with the media bay section**, ensuring that the progressive concrete and water levels are approximately equal (never exceed a difference of 200mm max). The concrete must be evenly distributed around the unit, ensuring spigot connections are not covered at this stage. **Never partly or wholly fill the tank with water before surrounding it in concrete.**

MECHANICAL INSTALLATION (continued)

Note: Do not use vibrating pokers to compact the concrete.

Make all interconnecting pipework connections, ensuring a minimum pipe gradient of 1:70.

Continue placing the concrete in 500mm lifts, terminating at the shoulder of the unit. Allow an initial set of the concrete between lifts and wait at least 24 hours for the concrete to harden.

Ensure a cable duct is laid from the 110mm connection on the neck of the treatment plant to the desired position of the Blower unit. This is for the airline only and is to ensure complete protection of the airline. There are NO electrical components within the treatment plant unless you have requested the option of a pumped discharge.

If the treatment plant is to be installed in a trafficked area specific guidance should be sought from C & L Fabrication Ltd

ELECTRICAL INSTALLATION (Blower Unit)

In order that you achieve a safe and cost effective installation, it is not possible to state a specific installation configuration that would suit all sites. The selection of current protection devices must remain the responsibility of the installer. It is imperative that electrical installation of this equipment is entrusted to a fully qualified electrician.

The blower unit can be positioned wherever is most convenient bearing in mind the need to get a power supply to it and the airline from it to the treatment plant.

If a pumped discharge has been requested on the treatment plant, the cable from the pump can be fed back up the airline duct to the blower unit within which is the electrical connection for the pump. Most pumps come complete with 10 meters of cable. The blower unit is supplied with 10 meters of airline as standard.

The airline duct MUST be sealed with expanding foam when installation is complete.

When installing the electrical supply to the CLF blower unit, the following points should be considered:

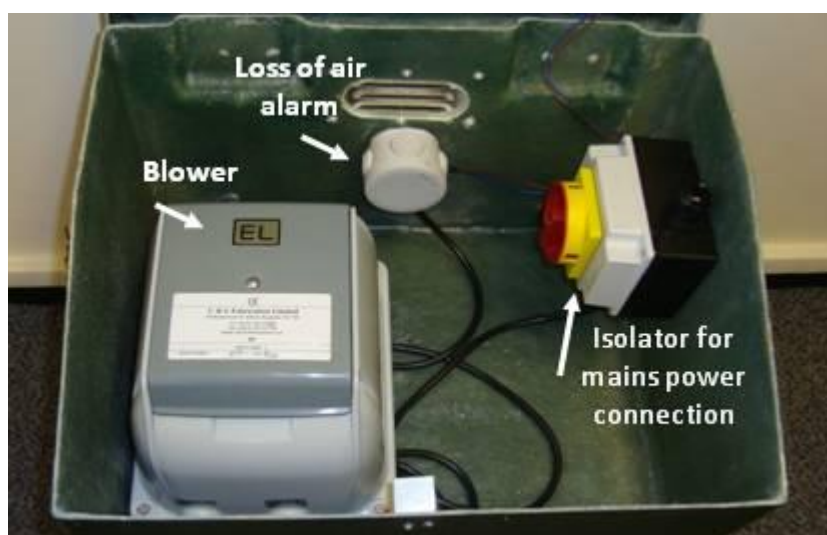
The supply to the CLF unit should be by means of a dedicated circuit with isolation and protection devices consistent with the requirements for fixed equipment and in accordance with the latest regulations of the Institute of Electrical Engineers.

ELECTRICAL INSTALLATION (continued)

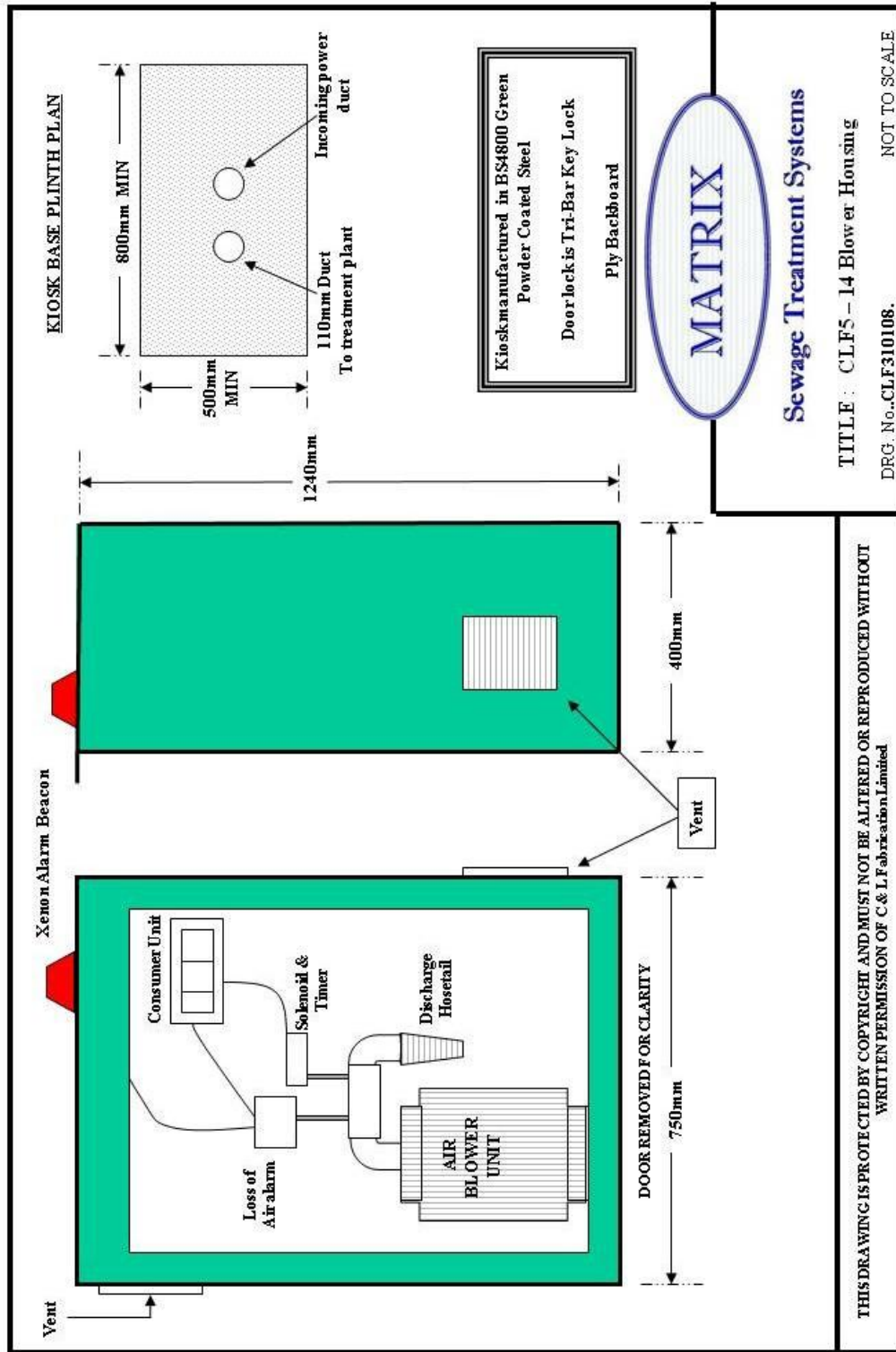
2. The supply to the CLF unit should be independent of all protection devices other than the supply authority's fuse and that provided specifically for the CLF power supply. In particular, earth leakage devices provided for normal domestic protection must **not** form part of the supply circuit to the CLF Unit.



CLF1 to CLF4 Blower & Housing



CLF 5 – 14 BLOWER HOUSING



THIS DRAWING IS PROTECTED BY COPYRIGHT AND MUST NOT BE ALTERED OR REPRODUCED WITHOUT WRITTEN PERMISSION OF C & L Fabrication Limited

OPERATING SEQUENCE

The **MATRIX** Sewage treatment plant is specifically designed to treat domestic sewage and other biodegradable waste in a simple and compact system comprising three basic stages, namely:

Primary settlement

Biological Filtration

Final settlement

The **MATRIX** system utilizes microorganisms growing on the surface of the filter media to breakdown the sewage. It is very important that toxic chemicals such as those listed in the Introduction (section 2) do not enter the system and poison the microorganisms.

Raw sewage flowing to the CLF unit is received in the primary settlement zone. Here, gross solids (primary sludge) settle to the bottom of the tank, where they remain until the tank is desludged as described in the Maintenance Schedule, section 6 of this manual. The settled sewage displaced from the primary zone then flows into the submerged filter zone, passing under a scum baffle.

Flow circulation in the submerged filter zone is generated by the hydraulic effect of the outlet air diffuser. This causes settled sewage entering the filter zone at high level to be drawn down through the media, aerating the sewage in the process. The flow circulation ensures that the influent sewage receives several passes through the filter bed at low flow.

In the filter zone, as the sewage passes over the filter media it is purified by microorganisms growing on the surface of the media. Growth of these micro-organisms results in an excess which is shed as solid particles known as humus solids. Humus solids settling at the bottom of the filter zones are recirculated with the flow of incoming sewage and are deposited on the top of the primary settlement zone.

Sewage displaced from the submerged filter zone flows via a DIP pipe into the humus settlement zone. Liquid displaced from the humus zone has now been fully treated and is known as final effluent. It is suitable for discharge to a watercourse or soakaway as defined in the consent to discharge issued by the Environment Agency.

Humus solids from the final settlement tank are recirculated to the primary tank via the recirculation pipework. This helps reduce the sludge build up in the humus tank and prevents stagnation during very low inflow.

PLANT START UP / SHUTDOWN PROCEDURE**PLANT START-UP**

1. Fill the plant with clean water until there is a discharge from the outlet.
2. Connect the airline from the blower unit to the receiving hosetail inside the neck of the treatment plant and ensure the connections are airtight
3. Check the blower ventilation is unobstructed.
4. Turn on the main power supply to the blower unit.
5. Turn the isolator switch inside the blower housing to the on position. This will start the blower running.
6. It will take a minute or so for the pressure to build up in the system depending on the distance of the blower from the treatment plant.
7. Check that bubbles are breaking the surface in the filter media section of the treatment plant.
8. Adjust the flow regulator thumbscrew on the airlift recycle to achieve an almost constant flow from the recycle pipework. NOTE: It will take about a minute between adjustments for a change in flowrate. The desired setting is where the flow only just becomes constant. If this flowrate is set too high it will detrimentally affect the process performance of the treatment plant.
9. If a discharge pump is fitted check for operation.
10. Fit the manhole cover and lock if necessary.

The CLF Unit is now in an operational state. However, the treatment process relies on the growth of microorganisms on the filter media. The time taken for these naturally occurring organisms to develop is dependent on temperature and may take up to six weeks in winter. Until the biomass is fully developed, the treatment process will be incomplete. During this time do not allow any strong cleaning agents or bleaches to enter the system.

PLANT SHUTDOWN

Temporary absence of flow to the plant will not be detrimental as the air lift will continue to recycle sewage within the system. However, if the flow of sewage to the plant will be interrupted for more than four months, the following procedure should be completed:

1. Desludge the primary and humus tank compartments in accordance with the instructions in the Maintenance, section 6 of this manual.
2. Refill the plant with clean water.
3. Fit the manhole cover and lock if necessary.
4. Stop the blower by turning the isolator switch to off.
5. Switch off the power supply to the blower enclosure.

MAINTENANCE**OWNER RESPONSIBILITY**

The owner of the sewage treatment plant is entirely responsible for the operation of the plant and for ensuring that the quality of the effluent does not breach the Discharge Consent Standards issued by the Environment Agency

You are reminded that the existence of a service agreement does not transfer responsibility for general maintenance which must be conducted in accordance with the accompanying instructions.

Soakaways, drains and the emptying of primary tanks remain the responsibility of the treatment plant owner

If the plant appears not to be operating correctly, refer to the Fault Finding, section 7 of this manual or contact C & L Fabrication Ltd for advice

MAINTENANCE SCHEDULE***WEEKLY***

1. Check the operation of the blower. If the blower has failed for any reason other than a mains power failure the warning beacon will be flashing

MONTHLY

Carry out the weekly check plus:

1. Check the operation of the diffusers (bubbles rising in the Biological zone).
2. Check the recycle flow into the inlet zone
Look at the liquor being returned, it should run clear by the end of its cycle.
4. Check the inlet and outlet stilling zones are clear of debris.(remove any obstructions)
5. Check the blower ventilation is un-obstructed
6. Check the biomass growth on the filter media. The biomass should be a light brown colour, not white or grey. The odour in the plant should be 'earthy'. here should not be a noticeable 'rotten eggs' smell.
7. Check the final effluent. If this is cloudy or contains many suspended articles, then the humus tank is likely to require desludging.

MAINTENANCE SCHEDULE (continued)**6 MONTHLY / ANNUALLY**

Carry out the weekly and monthly checks plus:

1. Check the primary settlement tank with a probe, the top floating crust blanket should not exceed 200mm thick, arrange desludge if required
2. Desludge the primary and final tank every 6 months and desludge the biozone every 12 months. This should be done by an experienced local waste disposal tankering company.
3. The tanker suction hose should be carefully lowered into the primary and final chambers ensuring all settled sludge is removed.
4. When desludging the biozone carefully lower the suction hose down the triangular section behind the biozone making sure not to damage the pipework. Ensure the hose is down to the base of the tank so that all settled biomass sludge can be removed.
5. After desludging each compartment, it is essential that the unit is filled up with water. This can be done by using a hosepipe or by running several taps in the household(s).
6. Remove air filter from the blower unit (remove top cover to access filter), clean and replace.

See general layout drawings 'CLF1-17 Desludge' in the technical data section for desludge points

Repeat the Plant Start-up Procedure, section 5 of this manual.

FAULT FINDING

1. THE BLOWER IS NOT RUNNING

	Cause	Remedy
1.1	Power cut.	If temporary do nothing. When the power is restored the system will restart automatically
1.2	Power supply RCD has tripped.	Switch off the power and reset the RCD, Switch on and the blower should restart automatically. If it doesn't, switch off the power supply and call an electrician, on 3 phase supply check correct rotation.
1.3	Blower runs Intermittently	Check air ducts are clear, as overheating in the enclosure will cause the high temperature trip to switch of the power until cool.

2. AIR BUBBLES ARE NOT RISING FROM THE DIFFUSER

	Cause	Remedy
2.1	Blower is not running.	Refer to fault condition 1.
2.2	Blower running	Check all valves open, and all air lines are not broken or leaking.

3. THERE IS NO RECIRCULATION FLOW FROM THE HUMUS TANK COMPARTMENT

	Cause	Remedy
3.1	Blower fault.	Refer to fault conditions 1 & 2.
3.2	Recirculation pipework is blocked	Use a wooden pole to agitate any sludge which has settled around the bottom of the recirculation pipework in the humus tank. If there is a substantial level of sludge, then desludge the humus tank as described in the Maintenance Schedule, section 6 of this manual.
3.3	The air control jet is blocked	Remove and clean the jet. In cleaning the jet ensure the orifice is not enlarged.

TECHNICAL DATA

Model No	CLF1 (6pe)	CLF2 (12pe)	CLF3 (18pe)
Max Daily Flow	1.2m ³ /day	2.4m ³ /day	3.6m ³ /day
Total BOD Load	0.36kg/day	0.72kg/day	1.08kg/day
Population Equivalent	6	12	18
Overall Depth	2100mm	2100mm	2100mm
Diameter	1500mm	1900mm	2500mm
Inlet Invert (Std)	550mm	550mm	550mm
Outlet Invert	750mm	750mm	750mm
Cover Size	1.0m ²	1.0m ²	1.5m x 1.0m
Blower Rating	60w/240v	80w/240v	120w/240v
Discharge Pump rating (optional)	0.2kw/240v	0.2kw/240v	0.2kw/240v
Desludge Frequency (Based on full load)	180 days	180 days	180 days
Inlet Connection	110mm	110mm	110mm
Outlet Connection (Gravity)	110mm	110mm	110mm
Outlet Connection (pumped discharge)	63mm MDPE	63mm MDPE	63mm MDPE
Weight (empty)	250kgs	350kgs	500kgs

Model No	CLF4 (25pe)	CLF5 (30pe)	CLF6 (40pe)	CLF7 (50pe)
Max Daily Flow	5.0m ³ /day	6.0m ³ /day	8.0m ³ /day	10.0m ³ /day
Total BOD Load	1.50kg/day	1.80kg/day	2.40kg/day	3.00kg/day
Population Equivalent	25	30	40	50
Overall Depth	2174mm	2174mm	2174mm	2174mm
Width	1500mm	2124mm	2124mm	2124mm
Length	4710mm	4010mm	5060mm	5610mm
Inlet Invert (Std)	600mm	600mm	600mm	600mm
Outlet Invert	862mm	862mm	862mm	862mm
Blower Rating	170w/240v	0.55Kw/240v	0.55Kw/240v	0.55Kw/240v
Discharge Pump rating (optional)	0.2kw/240v	0.2kw/240v	0.2kw/240v	0.2kw/240v
Desludge Frequency (Based on full load)	180 days	180 days	180 days	180days
Inlet Connection	160mm	160mm	160mm	160mm
Outlet Connection (Gravity)	160mm	160mm	160mm	160mm
Outlet Connection (pumped discharge)	63mm MDPE	63mm MDPE	63mm MDPE	63mm MDPE
Weight (empty)	1200kgs	1400kgs	1700kgs	1900kgs

Model No	CLF8 (60pe)	CLF9 (70pe)	CLF10 (80pe)	CLF11 (90pe)	CLF12 (100pe)
Max Daily Flow	12m3	14m3	16m3	18m3	20m3
Total BOD	3.60kg/day	4.20kg/day	4.80kg/day	5.40kg/day	6.00kg/day
Population Equivalent	60	70	80	90	100
Overall Depth	2174mm	2174mm	2174mm	2174mm	2174mm
Width	2124mm	2124mm	2524mm	2524mm	2524mm
Length	6010mm	6810mm	6760mm	7360mm	7760mm
Inlet Invert (Std)	600mm	600mm	600mm	600mm	600mm
Outlet Invert	862mm	862mm	862mm	862mm	862mm
Blower Rating	0.75kw	0.75kw	0.75kw	1.10kw	1.10kw
Desludge Frequency	110 days	110 days	90 days	90 days	90 Days
Inlet Dia	160mm	160mm	160mm	160mm	160mm
Outlet Dia	160mm	160mm	160mm	160mm	160mm
Outlet (pumped)	63mm MDPE	63mm MDPE	63mm MDPE	63mm MDPE	63mm MDPE
Weight Empty	2100kg	2200kg	2350kg	2650kg	2950kg

Model No	CLF13 (125pe)	CLF14 (150pe)	CLF15 (200pe)	CLF16 (250pe)	CLF17 (300pe)
Max Daily Flow	25m3	30m3	40m3	50m3	60m3
Total BOD	7.50kg/day	9.00kg/day	12.00kg/day	15.00kg/day	18.00kg/day
Population Equivalent	125	150	200	250	300
Overall Depth	2900mm	2900mm	2900mm	2900mm	2900mm
Width	1500mm	1500mm	1500mm	2250mm	2400mm
Length	8200mm	9200mm	10500mm	11500mm	12000mm
Inlet Invert (Std)	600mm	600mm	600mm	600mm	600mm
Outlet Invert	700mm	700mm	700mm	700mm	700mm
Blower Rating	1.1kw (240v)	1.1kw (240v)	2.0kw (415v)	3.0kw (415v)	4.0kw (415v)
Desludge Frequency	90 days	90 days	90 days	90 days	90 Days
Inlet Dia	160mm	160mm	160mm	160mm	160mm
Outlet Dia	160mm	160mm	160mm	160mm	160mm
Outlet (pumped)	63mm MDPE	63mm MDPE	63mm MDPE	63mm MDPE	63mm MDPE
Weight Empty	2900kg	3250kg	3400kg	3600kg	3850kg

MATRIX PACKAGE SEWAGE TREATMENT PLANT

PROCESS DESCRIPTION

INFLUENT DESIGN PARAMETERS.

DWF (Dry Weather Flow)	=	As data sheet
Peak Design Flow	=	3 x DWF
Organic Load	=	As data sheet
Nature of Influent	=	CRUDE SEWAGE
PH Range	=	6 – 8
Standard Effluent Quality	=	20mg / L BOD : 30mg / L SS : 20mg/L NH4

ALL SURFACE WATER MUST BE EXCLUDED. – NO WASTE DISPOSAL UNITS IN USE

AN EFFECTIVE GREASE TRAP MUST BE INSTALLED ON ANY COMMERCIAL KITCHEN DRAINS eg.: HOTELS / RESTAURANTS

The “Matrix” treatment plant is of unitank design and incorporates Primary Settlement (PST) Biological Treatment (Biozone), and Final Settlement (FST) within the same structure, allowing delivery to site as a complete unit to provide for a simple and straightforward installation. No other tanks are required except for larger applications (over 300 p.e.) where a modular system is provided or where additional treatment may be required to achieve more stringent effluent quality standards or where effluent re-use is proposed.

The "Matrix" Treatment plant has been designed to optimize the aesthetic qualities of the final installation by ensuring that there is minimum visual impact. The "Matrix" process is designed in accordance with the requirements of BS 6297 and certified to BSEN 12566 – Pt3

PRIMARY SETTLEMENT TANK

The primary settlement tank is a two stage tank designed to maximize the removal of gross and suspended solids prior to transfer of the settled effluent to the biozone for treatment. The primary settlement tank also incorporates for a sludge storage volume (based on full load) depending on the desludge periods as identified for individual applications.

BIOZONE

The biological treatment phase utilizes BAF technology (biological aerated filter) which incorporates two proven principles of biological process in the form of a fixed film reactor for process stability and a suspended floc dispersed growth system for high transfer rates and operational control, to ensure a stable treatment process which is largely unaffected by shock loads.

The process incorporates a submerged, high rate, plastic media on which a fixed film of biomass is grown. This film takes nutrition from the incoming settled effluent and is provided with oxygen by means of a small blower unit which aerates the media through HDPE membrane diffusers to provide fine bubble aeration.

BIOZONE : contd.

The action of the fine bubble aeration is carefully controlled to provide optimum oxygen transfer rates and to provide a scouring action to slough off excess biomass to keep the thickness of the fixed biological film at optimum levels, thereby preventing the production of anaerobic bacteria and ensuring maximum process efficiency. The fact that the media remains submerged allows for an element of suspended floc dispersed growth which basically means that there will be biomass which is “unfixed” to the media but achieves treatment through suspended aeration.

The biozone incorporates a two stage process as standard that allows for constant mixing of incoming settled effluent to provide optimum treatment stability and to avoid any “short-circuiting.”

The use of a two stage biozone ensures a high degree of process efficiency to not only reduce B.O.D. levels to that required, but will also achieve reductions in ammoniacal nitrogen in excess of standard requirements.

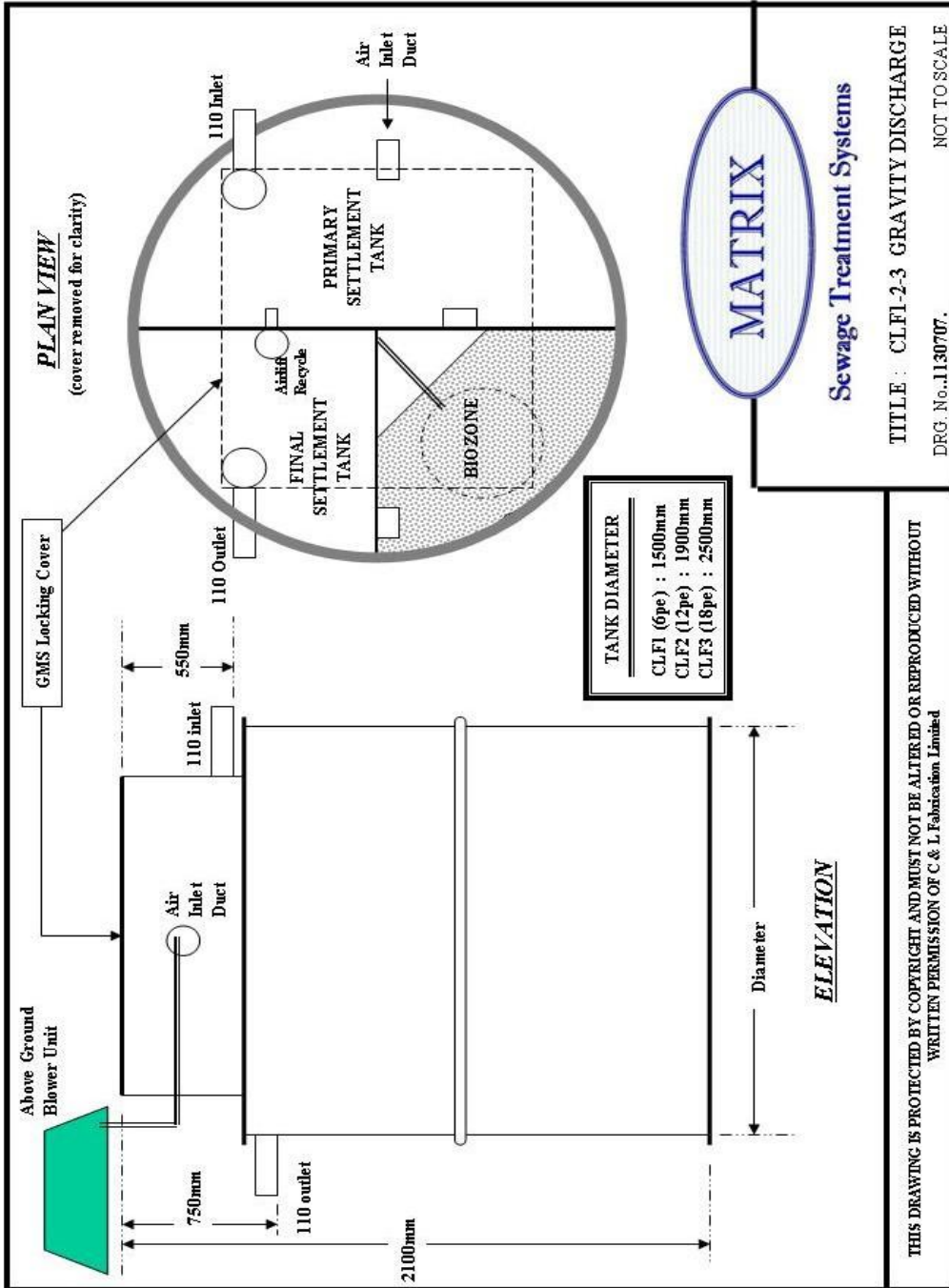
FINAL SETTLEMENT TANK

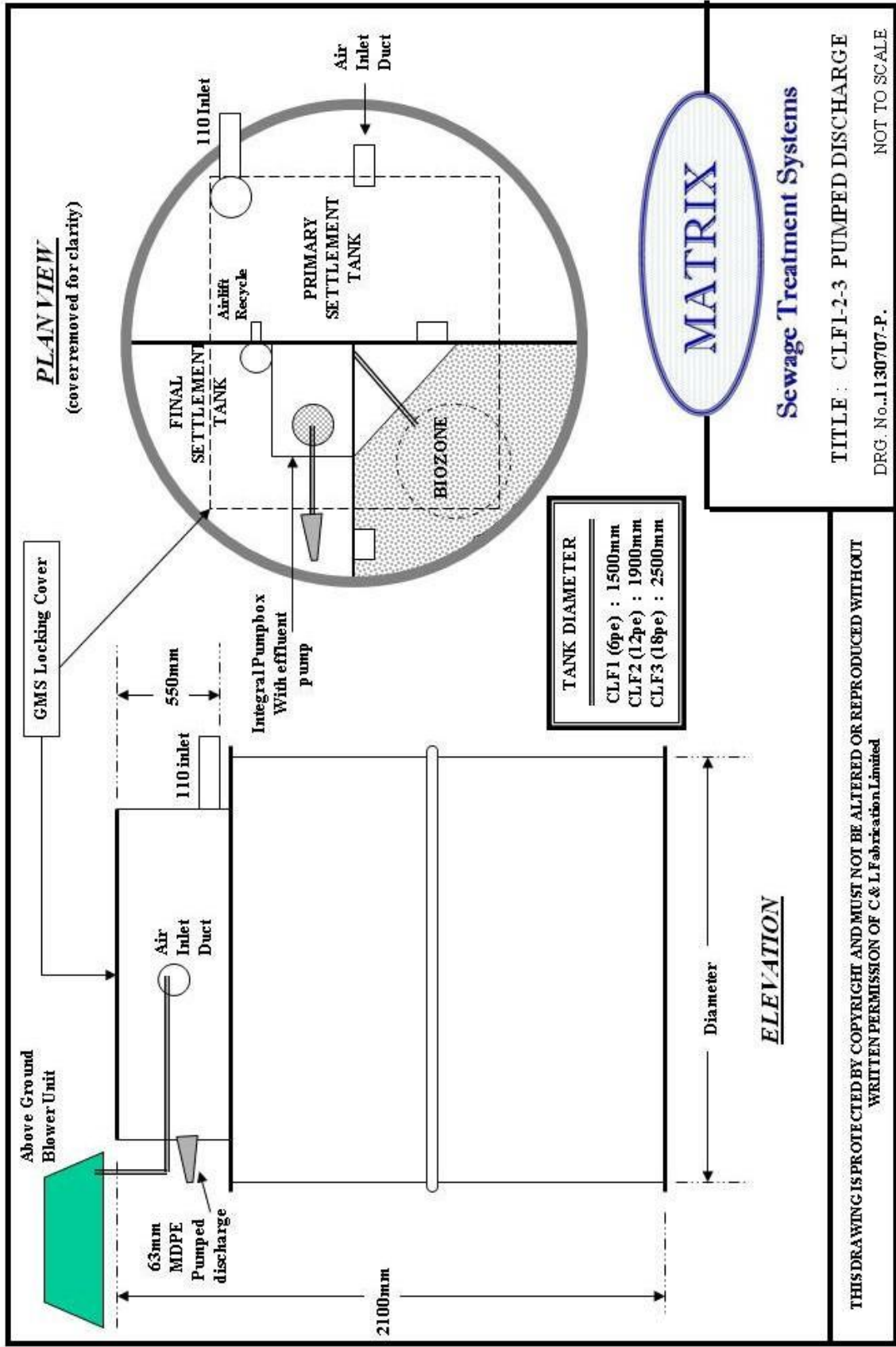
The final settlement tank is designed in accordance with the requirements of BS 6297 to ensure relevant surface areas and rise rates are achieved to provide maximum settlement of any suspended solids prior to discharge.

The “**Matrix**” system also incorporates continuous and automatically timed humus sludge return systems to return humus sludge from both the final settlement tank and each biozone, back to the primary settlement tank.

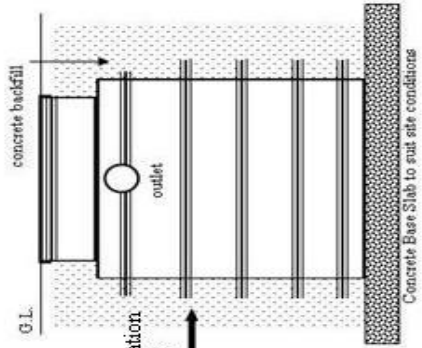
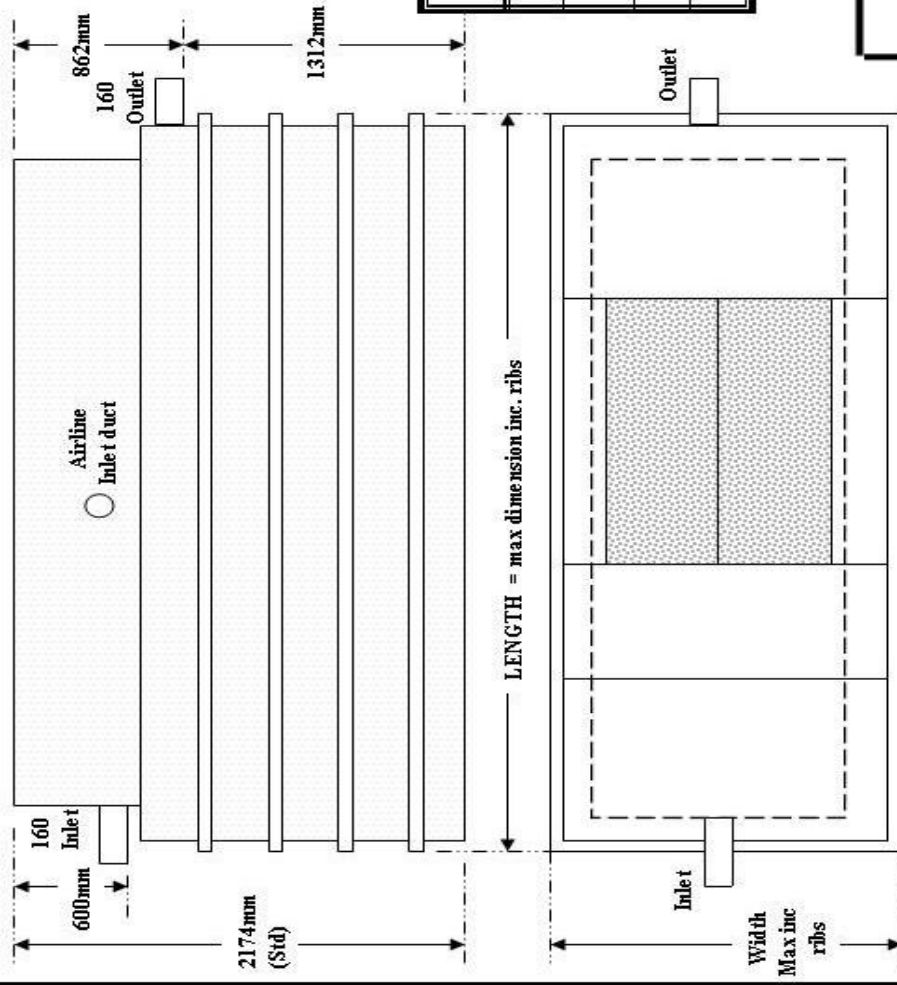
Additionally this system also provides for continuous recycling of treated effluent back to the P.S.T. to not only provide dilution of incoming settled effluent but to also ensure continuous flow during periods of low or no flow, thereby keeping the biomass in prime condition.

To maximize efficiency and to minimize maintenance requirements and potential problems, there are NO mechanical or moving parts contained within the treatment plant.





COVERS are flush mounted GMS locking (Pedestrian Duty)



MODEL Ref	Width	Length	Blower Rating
CLF 4 (25pe)	1500mm	4710mm	120w
CLF 5 (30pe)	2124mm	4010mm	0.55kw
CLF 6 (40pe)	2124mm	5060mm	0.55kw
CLF 7 (50pe)	2124mm	5610mm	0.55kw

MATRIX

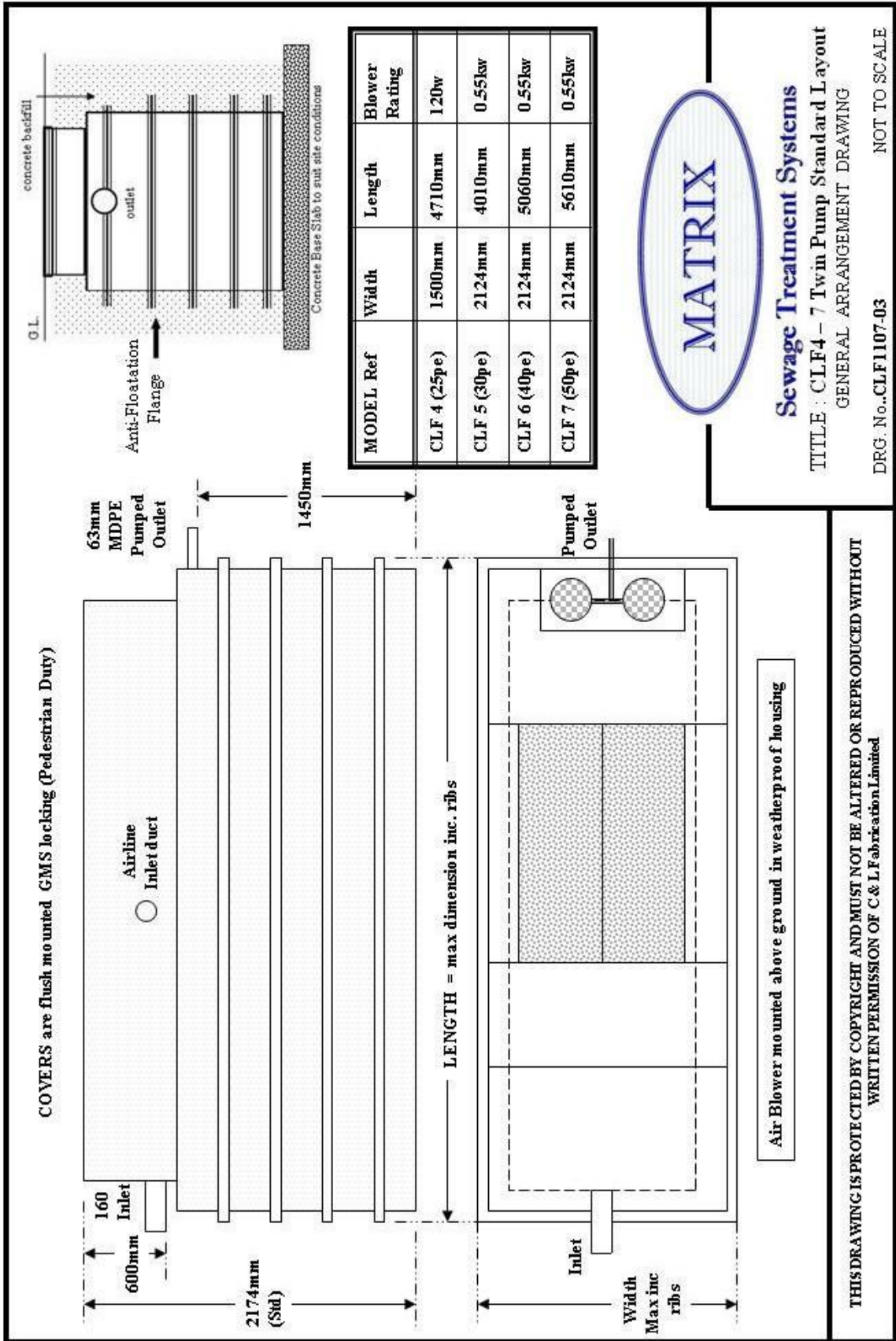
Sewage Treatment Systems

TITLE : CLF4 - 7 Standard Layout

DRG. No., CLF1107-02 NOT TO SCALE

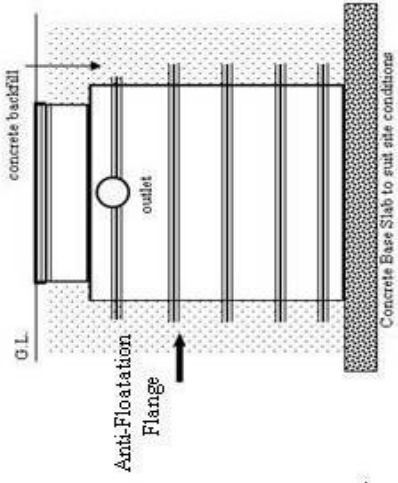
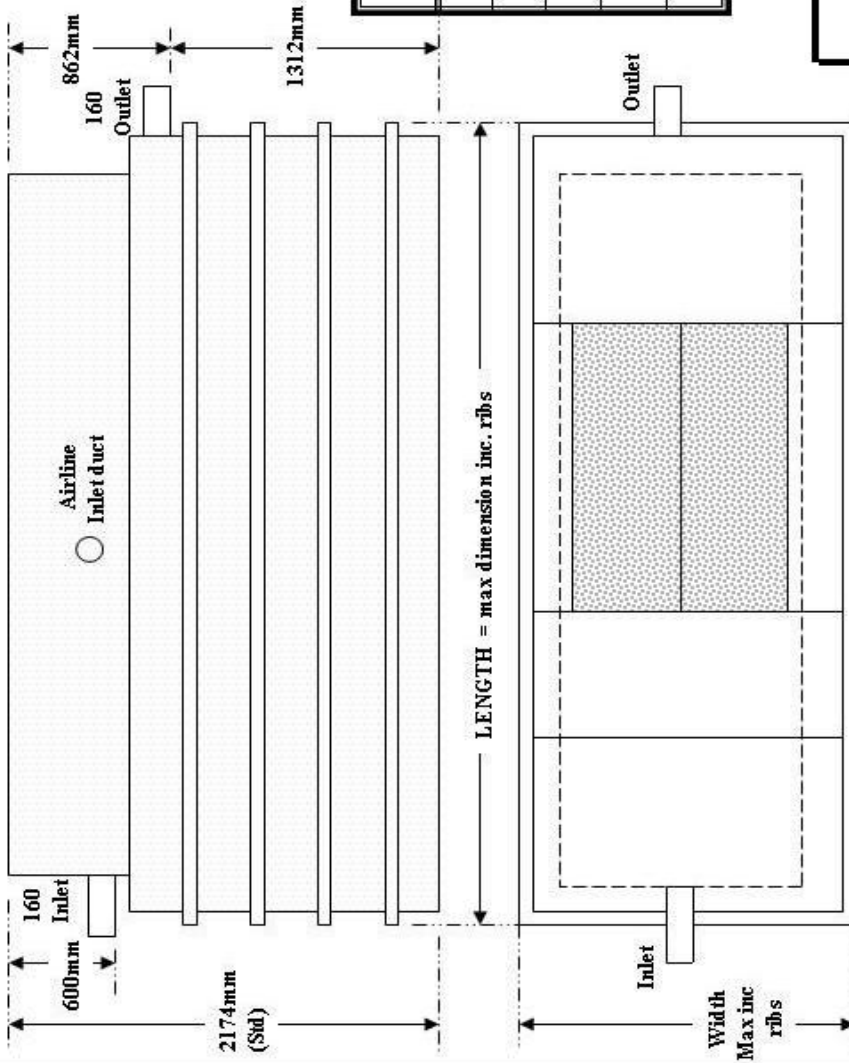
Air Blower mounted above ground in weatherproof housing

THIS DRAWING IS PROTECTED BY COPYRIGHT AND MUST NOT BE ALTERED OR REPRODUCED WITHOUT WRITTEN PERMISSION OF C & L Fabrication Limited



THIS DRAWING IS PROTECTED BY COPYRIGHT AND MUST NOT BE ALTERED OR REPRODUCED WITHOUT WRITTEN PERMISSION OF C & L Fabrication Limited

COVERS are flush mounted GMS locking (Pedestrian Duty)



MODEL Ref	Width	Length	Blower Rating
CLF 8 (60pe)	2124mm	6010mm	0.75kw
CLF 9 (70pe)	2124mm	6810mm	0.75kw
CLF10 (80pe)	2524mm	6760mm	0.75kw
CLF11 (90pe)	2524mm	7360mm	1.10kw
CLF12 (100pe)	2524mm	7760mm	1.10kw

MATRIX

Sewage Treatment Systems

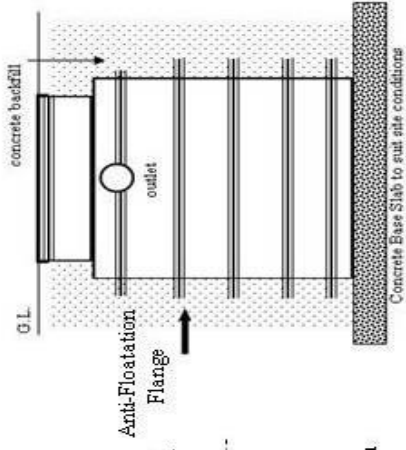
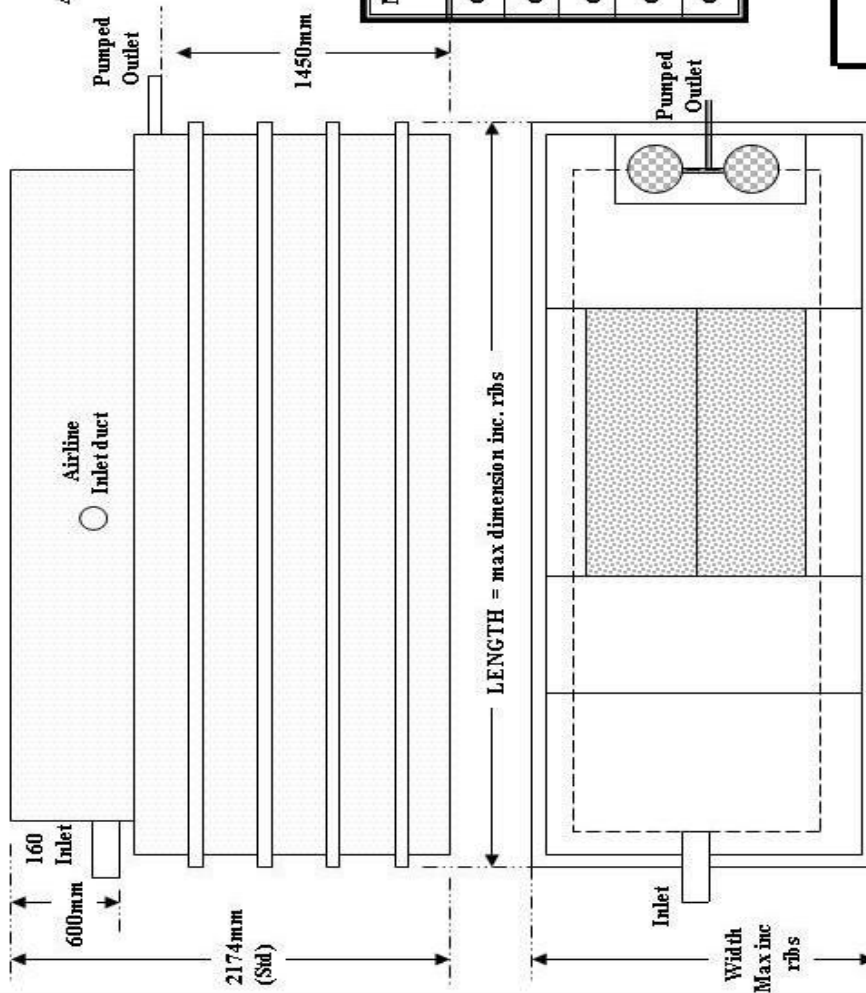
TITLE : CLF8 - 12 Standard Layout

DRG. No. CLF1107-812L NOT TO SCALE

Air Blower mounted above ground in weatherproof housing

THIS DRAWING IS PROTECTED BY COPYRIGHT AND MUST NOT BE ALTERED OR REPRODUCED WITHOUT WRITTEN PERMISSION OF C & L Fabrication Limited

COVERS are flush mounted GMS locking (Pedestrian Duty)



MODEL Ref	Width	Length	Blower Rating
CLF 8 (60pe)	2124mm	6010mm	0.75kw
CLF 9 (70pe)	2124mm	6810mm	0.75kw
CLF10 (80pe)	2524mm	6760mm	0.75kw
CLF11 (90pe)	2524mm	7360mm	1.10kw
CLF12 (100pe)	2524mm	7760mm	1.10kw

MATRIX

Sewage Treatment Systems

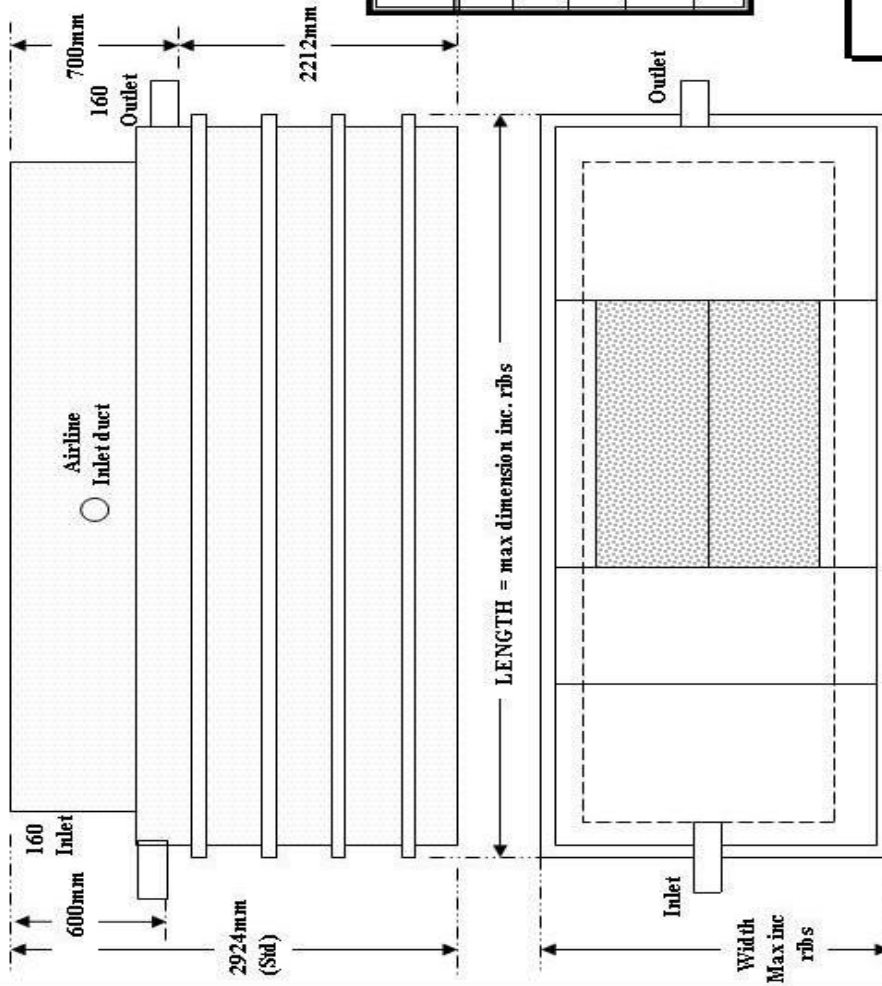
TITLE : CLF8 - 12 Standard Layout

DRG. No..CLF1107-812L NOT TO SCALE

THIS DRAWING IS PROTECTED BY COPYRIGHT AND MUST NOT BE ALTERED OR REPRODUCED WITHOUT WRITTEN PERMISSION OF C & L Fabrication Limited

Air Blower mounted above ground in weatherproof housing

COVERS are flush mounted GMS locking (Pedestrian Duty)



Air Blower mounted above ground in weather proof housing

MODEL Ref	Width	Length	Blower Rating
CLF 13 (129pe)	1600mm	8300mm	1.1kw
CLF 14 (150pe)	1600mm	9300mm	1.1kw
CLF15 (200pe)	1600mm	10600mm	2.0kw
CLF16 (250pe)	2350mm	11600mm	3.0kw
CLF17 (300pe)	2500mm	12100mm	4.0kw

MATRIX

Sewage Treatment Systems

TITLE : CLF13 - 17 Standard Layout

DRG. No.-CLF1107-812L NOT TO SCALE

THIS DRAWING IS PROTECTED BY COPYRIGHT AND MUST NOT BE ALTERED OR REPRODUCED WITHOUT WRITTEN PERMISSION OF C & L Fabrication Limited

1. Tank to be positioned on a flat level concrete base 150 mm thick.

2. In dry stable ground conditions the tank may be backfilled with free flowing granular material such as peashingle ONLY if the water table will NEVER rise above the base of the tank.

In wet, heavy ground a lean mix or mass concrete surround must be used dependant on the water table conditions.

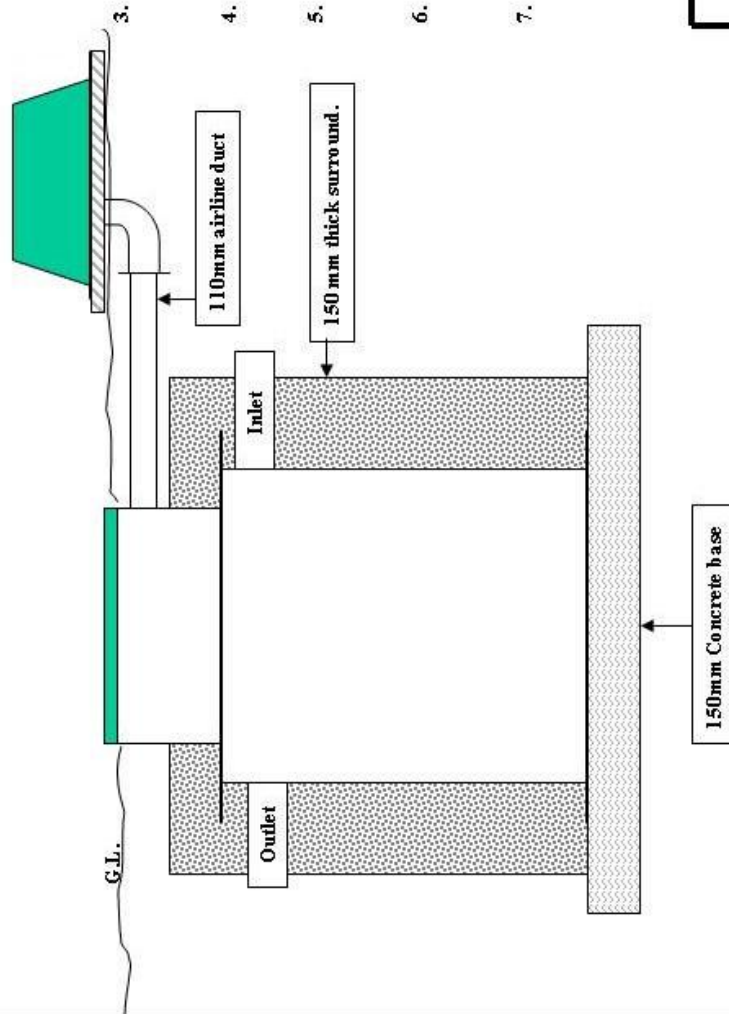
3. The tank should be filled with clean water at the same rate as the backfill ensuring all compartments maintain an equal level. Water may be left in the unit.

4. Provide & install 110mm duct from tank to point of blow position, remembering to install draw cord.

5. Connect clear airline to blowers tail with clip provided and pass through duct to connect to hose tail within treatment plant, ensuring that the hose is not kinked or twisted.

6. Connect 8mm opaque airline (where present) to solenoid push-fit connector and pass through duct to similar connector within treatment plant. (Not applicable to CLF1 & CLF2 units).

7. Ensure airline duct is sealed with expanding foam. Complete mains power connection to blower unit and turn on.



Sewage Treatment Systems

TITLE : CLF - INSTALL

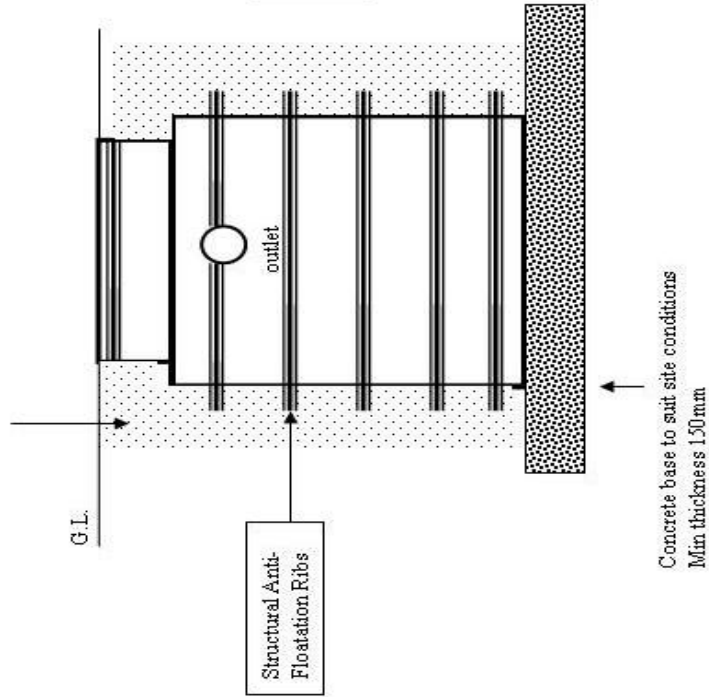
GENERAL ARRANGEMENT DRAWING

DRG. No. 010815

NOT TO SCALE

Special instructions will apply where units are installed that may be subject to imposed loadings from vehicles. – Please contact C & L Fabrication Ltd.

Concrete backfill to a minimum thickness of 150mm around tank.



Excavate hole to allow for 150mm bedding and surround. (see relevant drawing for tank dimensions)

Position tank on a flat level concrete base to suit tank size and prevailing ground conditions ensuring it is level in all planes

When backfilling tank ensure all internal chambers are filled with water to keep pace with the level of backfill.

Never let the level difference between the backfill and the water in the unit exceed 200mm.

In high water table conditions or trafficked areas please contact C & L Fabrication Ltd for specific advice

NOTE : Standard inlet invert is 600mm - shaft extensions can be provided for deeper inlet depths.

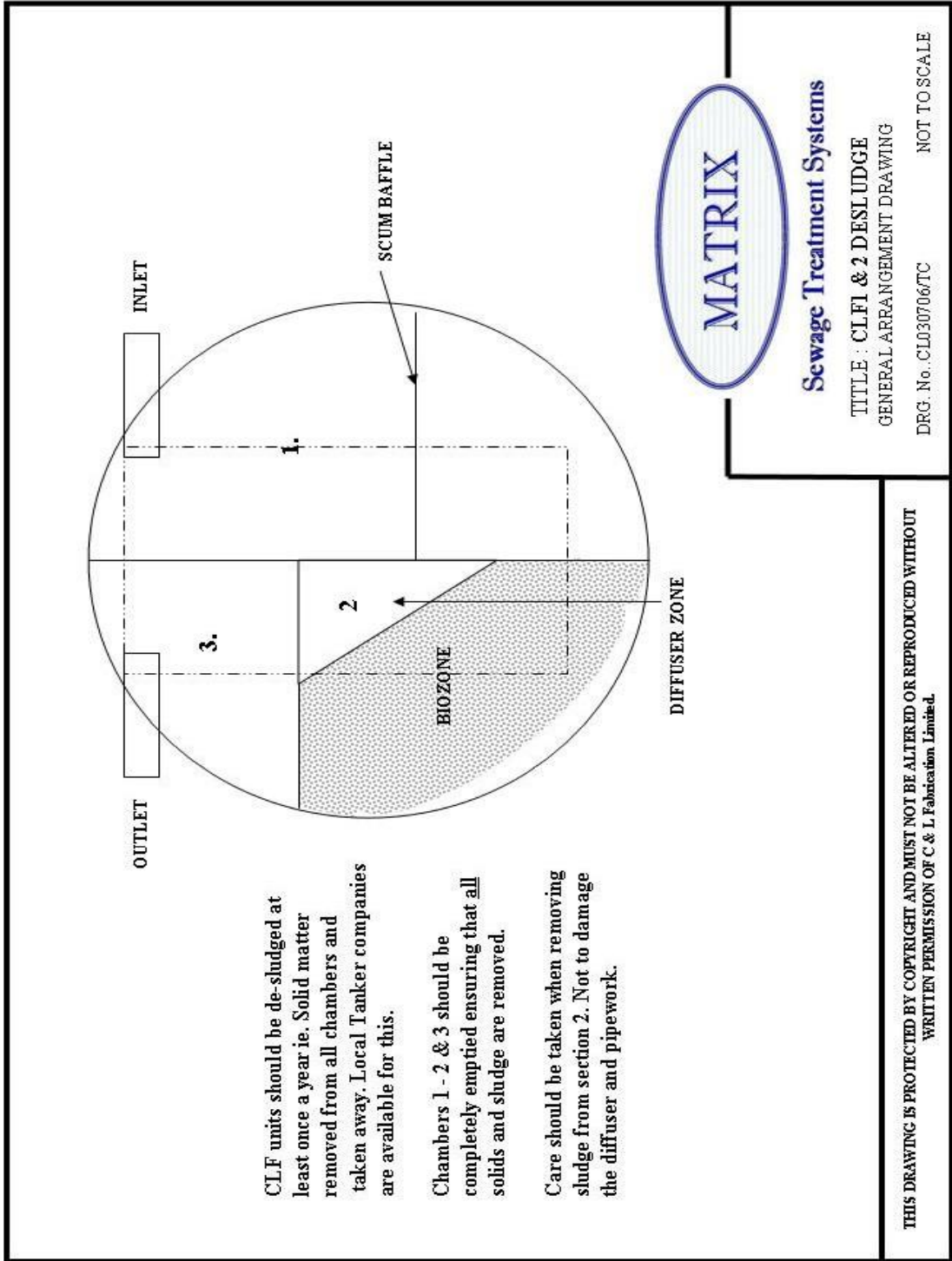
Inlet and outlet orientations can be changed to suit site requirements

Integral sample and effluent pumping arrangements available on request

This drawing should be read in conjunction with the Operation & Maintenance manual.



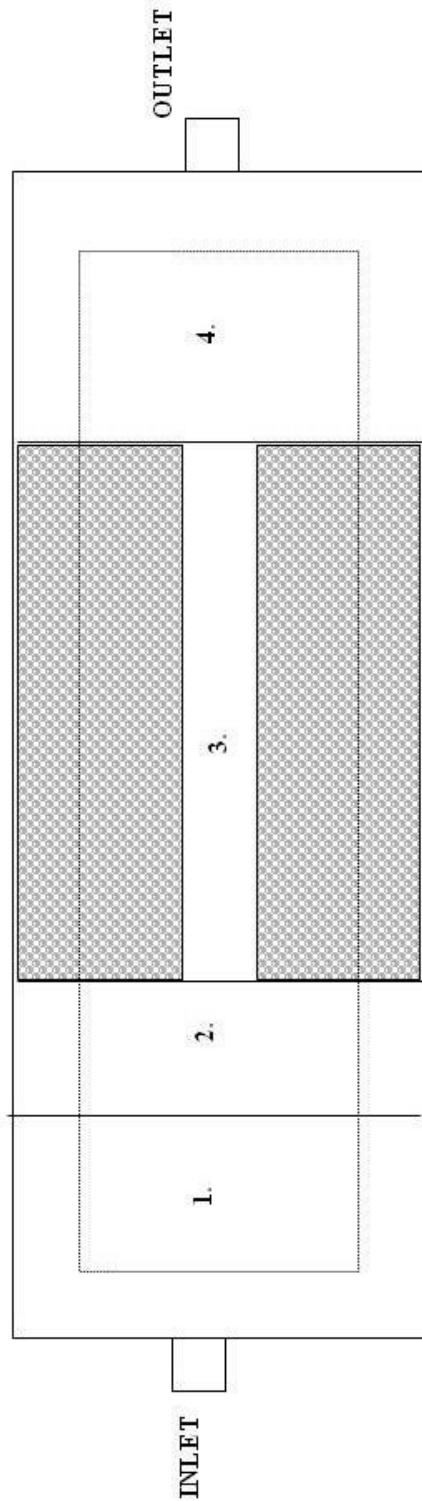
Sewage Treatment Systems
Sewage Treatment Plant Installation
GENERAL ARRANGEMENT DRAWING
DRG. No. STPINSTALL NOT TO SCALE



CLF units should be de-sludged at least once a year ie. Solid matter removed from all chambers and taken away. Local Tanker companies are available for this.

Chambers 1 - 2 & 3 should be completely emptied ensuring that all solids and sludge are removed.

Care should be taken when removing sludge from section 2. Not to damage the diffuser and pipework.



CLF units should be de-sludged at least once every 6 months i.e. Solid matter removed from all chambers and taken away. Local Tanker companies are available for this.

Chambers 1 - 2 - 3 & 4 should be completely emptied ensuring that all solids and sludge are removed.

Care should be taken when removing sludge from section 3, Not to damage the diffuser and pipework.

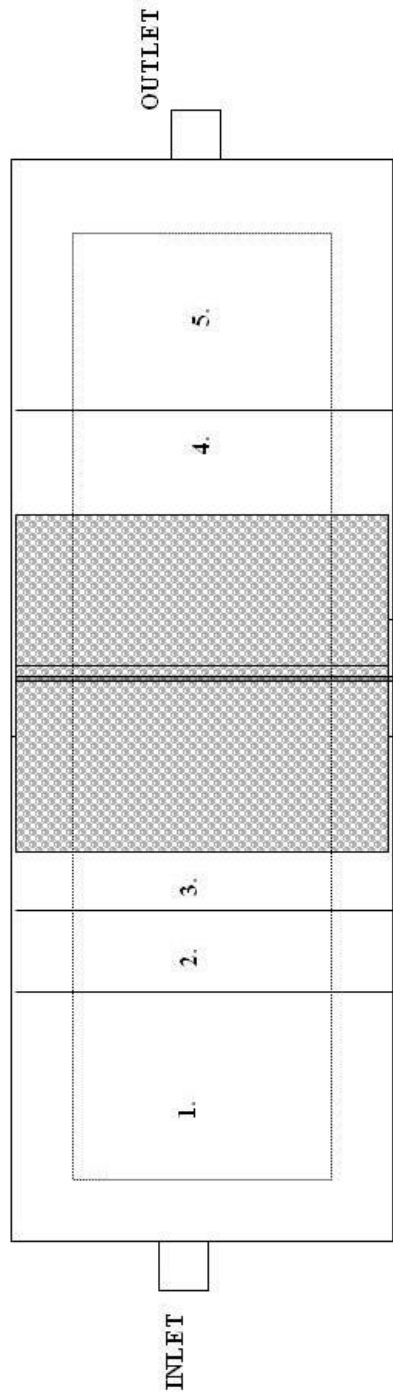
MATRIX

Sewage Treatment Systems

TITLE : CLF4 - 12 DESLUDGE
GENERAL ARRANGEMENT DRAWING

DRG. No. CLF310109 NOT TO SCALE

THIS DRAWING IS PROTECTED BY COPYRIGHT AND MUST NOT BE ALTERED OR REPRODUCED WITHOUT WRITTEN PERMISSION OF C & L Fabrication Ltd



CLF units should be de-sludged at least once every 6 months ie. Solid matter removed from all chambers and taken away. Local Tanker companies are available for this.

Chambers 1 - 2 - 3- 4 & 5 should be completely emptied ensuring that all solids and sludge are removed.

Chambers 3 & 4 should be completely emptied ensuring that all solids and sludge are removed.

MATRIX

Sewage Treatment Systems

TITLE : CLF13 - 17 DESLUDGE
GENERAL ARRANGEMENT DRAWING
DRG. No. CLF310109

NOT TO SCALE

THIS DRAWING IS PROTECTED BY COPYRIGHT AND MUST NOT BE ALTERED OR REPRODUCED WITHOUT WRITTEN PERMISSION OF C & L Fabrication Ltd



C&L Fabrication Limited
D3-D4 Hortonwood 10, Telford, Shropshire, TF1 7ES

09

EN 12566-3

Matrix CLF Sewage Treatment Plant

Hydraulic Daily Load:	1.2 – 10m ³ /day
Material	Polypropylene
Watertightness(water test)	Pass
Crushing Resistance (dry ground)	Pass
Crushing Resistance (wet ground)	Pass
Treatment Efficiency	COD : 91.4%
	BOD : 96.2%
	SS : 95.5%
	NH4-N : 83.3%
Electrical Consumption	1.4 kWh/d

C&L FABRICATION Ltd
D3-D4 Hortonwood 10
Telford
Shropshire
TF1 7ES

Tel : +44 (0) 1952 676666 Fax : +44 (0) 1952 677760

Freephone : 0800 32 888 52

Email : info@clfabrication.co.uk

Web : www.clfabrication.co.uk